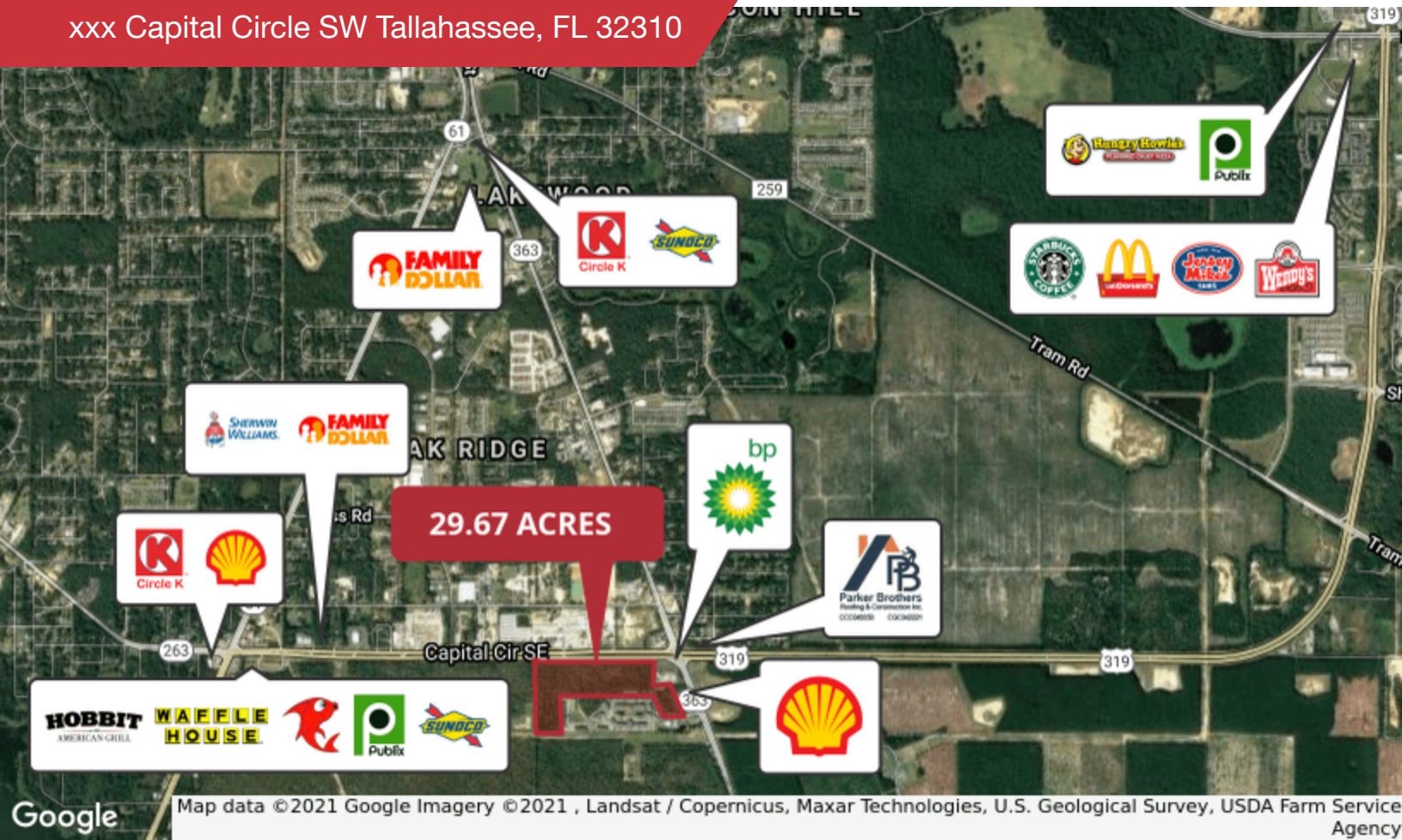


FOR SALE

xxx Capital Circle SW Tallahassee, FL 32310

NAI TALCOR



Land | 29.67 Acres

- 29.67 Acres Fronting on CCSW
- CP - Commercial Parkway Zoning
- Water/Sewer Available
- Located Between Southwood & Airport
- Zoning allows for many uses including apartment, self storage, ALF, automotive & warehouse
- Flat Topography
- Tax ID: 3130202080000

Sale Price: \$2,200,000

OFFERING SUMMARY

| | |
|-----------------------|--------|
| ADT CRAWFORDVILLE HWY | 23,000 |
| ADT CAPITAL CIRCLE SW | 19,100 |
| ZONING | CP |

DEMOGRAPHICS

| STATS | POPULATION | AVG. HH INCOME |
|----------|------------|----------------|
| 1 MILE | 1,330 | \$41,607 |
| 5 MILES | 67,213 | \$40,610 |
| 10 MILES | 229,178 | \$51,009 |

✉ **Jep Dove**
+1 850 509 1167
jep@talcor.com

✉ **Debbie Ashlin**
+1 850 544 5677
ashlin@talcor.com

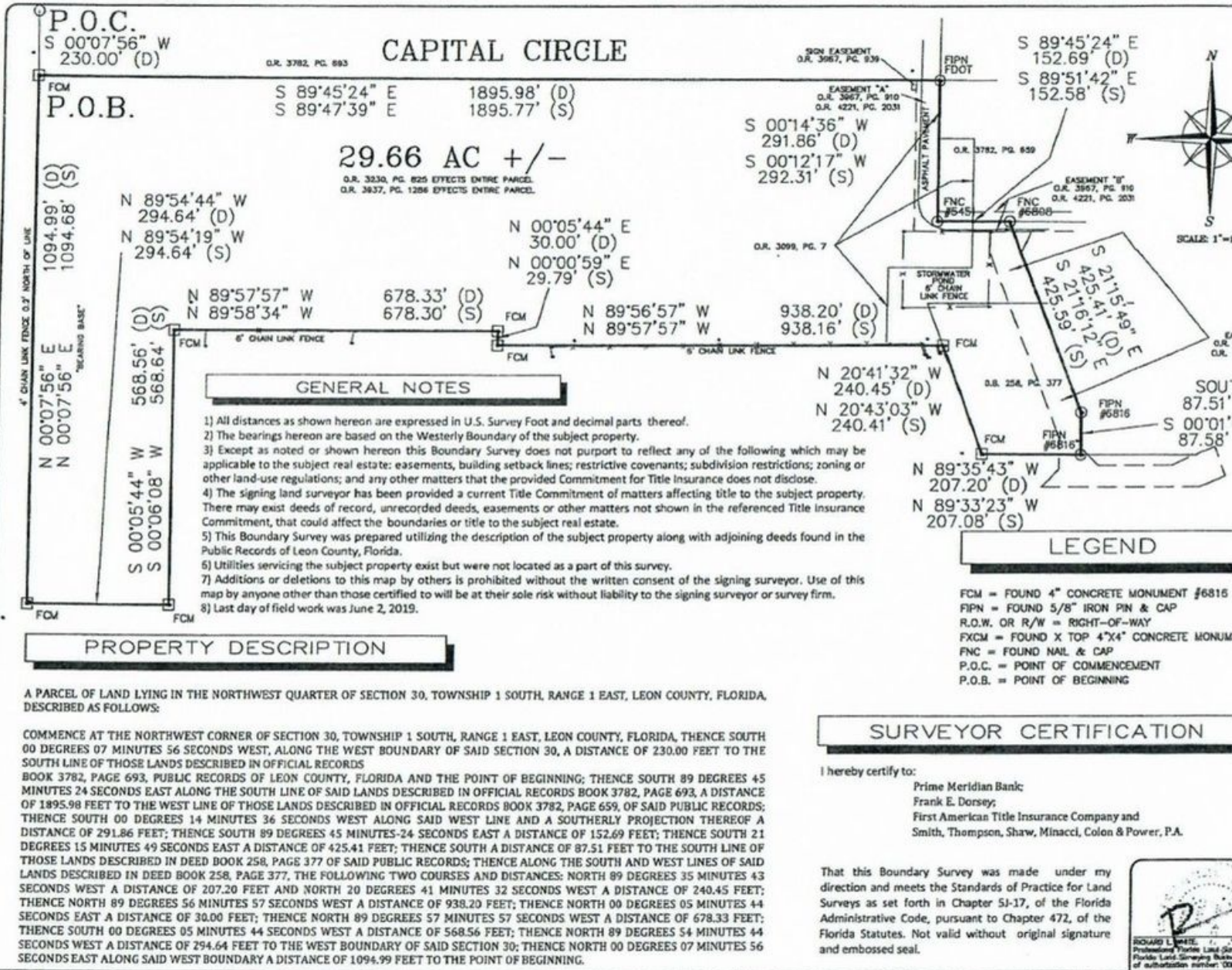
No Warranty Or Representation, Express Or Implied, Is Made As To The Accuracy Of The Information Contained Herein, And The Same Is Submitted Subject To Errors, Omissions, Change Of Price, Rental Or Other Conditions, Prior Sale, Lease Or Financing, Or Withdrawal Without Notice, And Of Any Special Listing Conditions Imposed By Our Principals. No Warranties Or Representations Are Made As To The Condition Of The Property Or Any Hazards Contained Therein Are Any To Be Implied.



NAI TALCOR
1018 Thomasville Road, Suite 200A
talcor.com

SURVEY

xxx Capital Circle SW Tallahassee, FL 32310



Jep Dove
+1 850 509 1167
jep@talcor.com

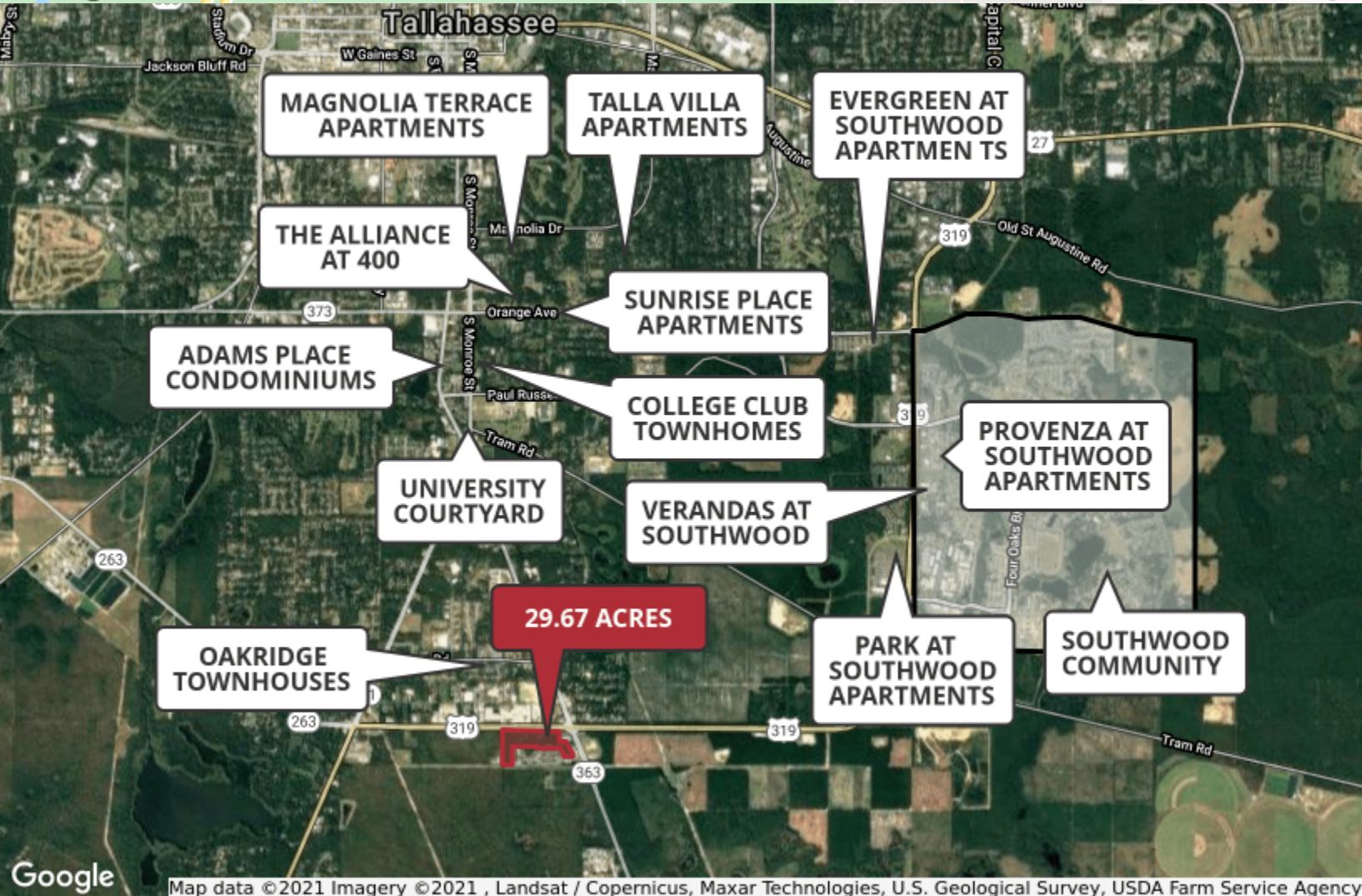
Debbie Ashlin
+1 850 544 5677
ashlin@talcor.com

No Warranty Or Representation, Express Or Implied, Is Made As To The Accuracy Of The Information Contained Herein And The Same Is Submitted Subject To Errors, Omissions, Change Of Price, Rental Or Other Conditions, Prior Sale, Lease Or Financing, Or Withdrawal Without Notice, And Of Any Special Listing Conditions Imposed By Our Principals No Warranties Or Representations Are Made As To The Condition Of The Property Or Any Hazards Contained Therein Are Any To Be Implied.

NAITACOR

FOR SALE

xxx Capital Circle SW Tallahassee, FL 32310



✉ **Jep Dove**
+1 850 509 1167
jep@talcor.com

✉ **Debbie Ashlin**
+1 850 544 5677
ashlin@talcor.com

No Warranty Or Representation, Express Or Implied, Is Made As To The Accuracy Of The Information Contained Herein And The Same Is Submitted Subject To Errors, Omissions, Change Of Price, Rental Or Other Conditions, Prior Sale, Lease Or Financing, Or Withdrawal Without Notice, And Of Any Special Listing Conditions Imposed By Our Principals No Warranties Or Representations Are Made As To The Condition Of The Property Or Any Hazards Contained Therein Are Any To Be Implied.

NAITACOR