

19,700
cars/day

139,000
cars/day

SWFWMD - Harney Road Homesite and Acreage

Harney Road, Thonotosassa, Florida 33592

4,000
cars/day

2.83 ± AC

Zeb Griffin, ALC
352-630-7547
zeb@saundersrealestate.com

PROPERTY OVERVIEW

AVAILABLE
2.83 ± AC

Sale Price

\$200,000

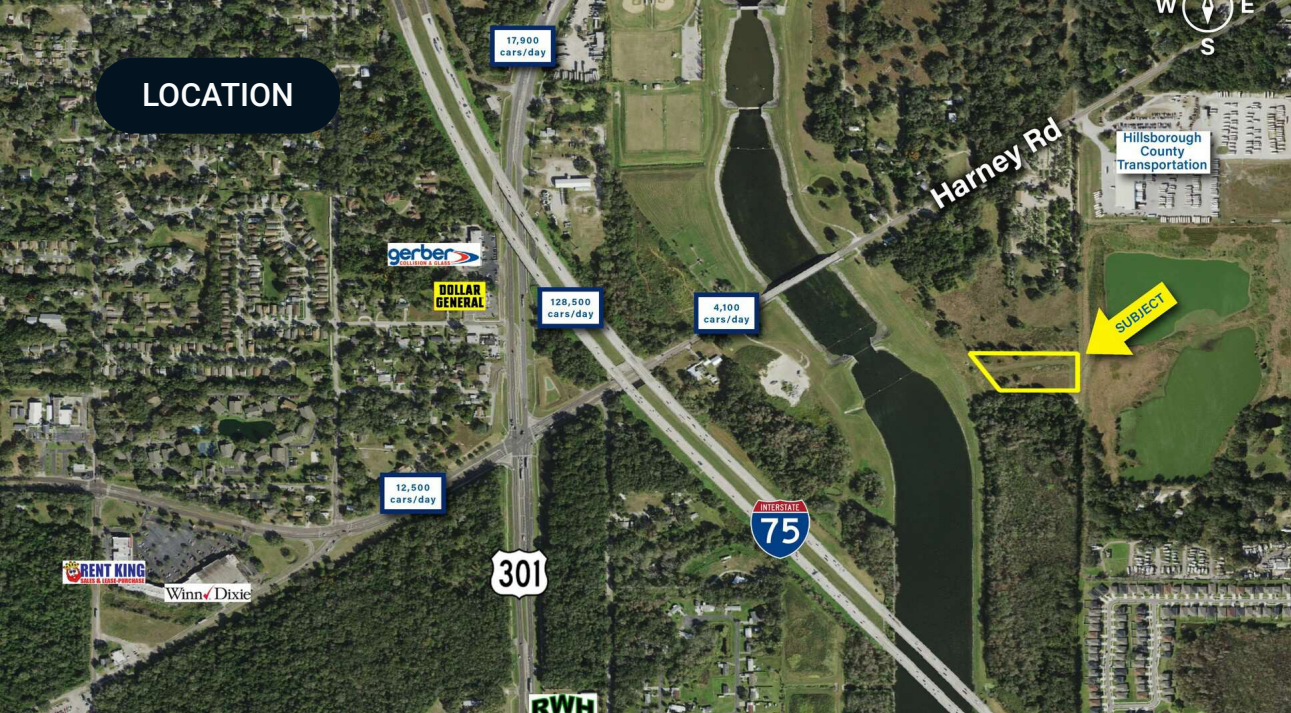
Offering Summary

Acreage:	2.85 Acres
Price / Acre:	\$70,175
State:	Florida
City:	Thonotosassa
County:	Hillsborough
Property Type:	Commercial

Property Overview

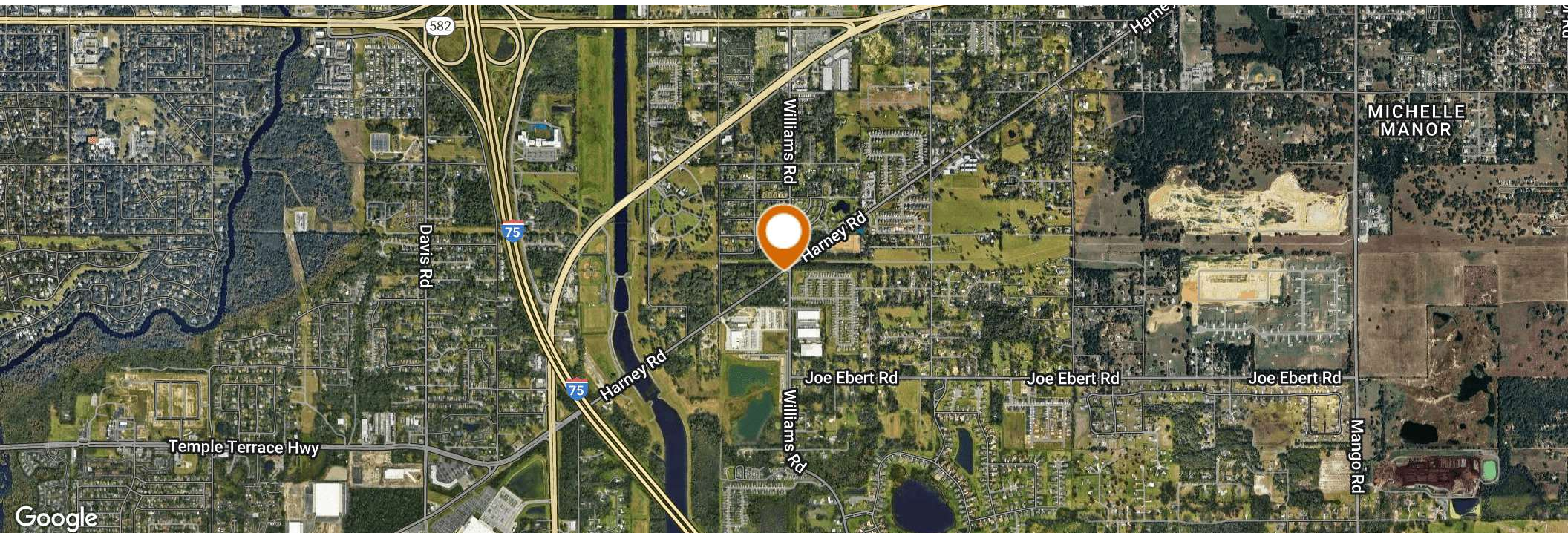
The subject property, located in Thonotosassa, FL, is an ideal acreage and homesite offering approximately 2 miles from exit 265 on I-75. The surrounding area is vibrant, with nearly 15,000 residents within a 2-mile radius and a youthful median age of 36.4. This demographic trend is partly due to the property's proximity to the University of South Florida, situated less than 5 miles northwest of the property. The property is well-suited for residential development, providing an excellent opportunity to create a peaceful and spacious homesite close to urban amenities.

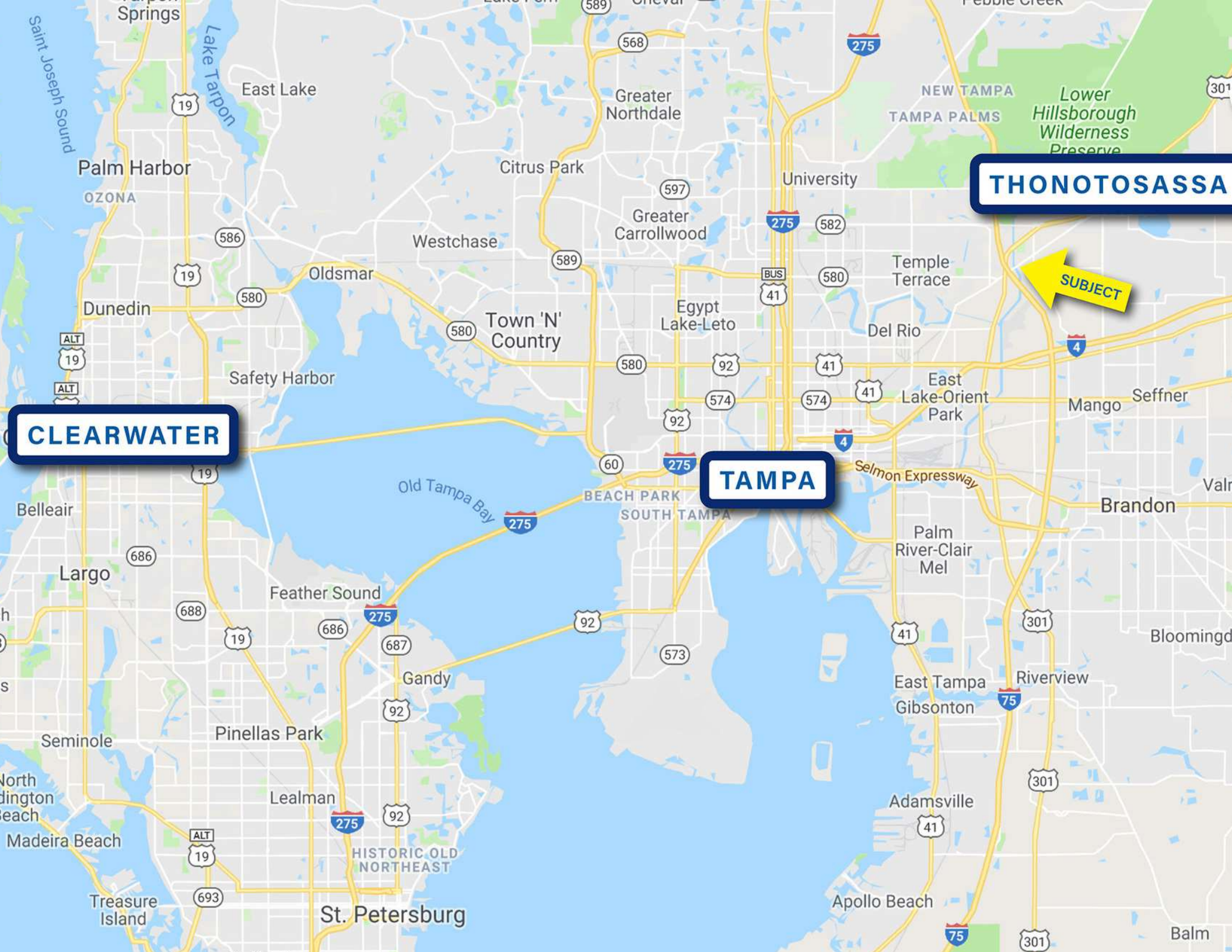
See page 4 in the marketing brochure, which shows the acreage breakdown. The ownership of the yellow highlighted area will be retained by Seller, with an easement granted to the Buyer of the non-highlighted area. The total outlined area is approximately 3.6 acres. The yellow highlighted easement area is approximately 0.75 acres, and the non-highlighted, which determines the available portion, is approximately 2.83 acres.



Location & Driving Directions

Parcel: U-19-28-20-ZZZ-000000-00000.1
 GPS: 28.0415933, -82.33575909999999
 Driving Directions:
 Showing Instructions: Contact Zeb





CLEARWATER

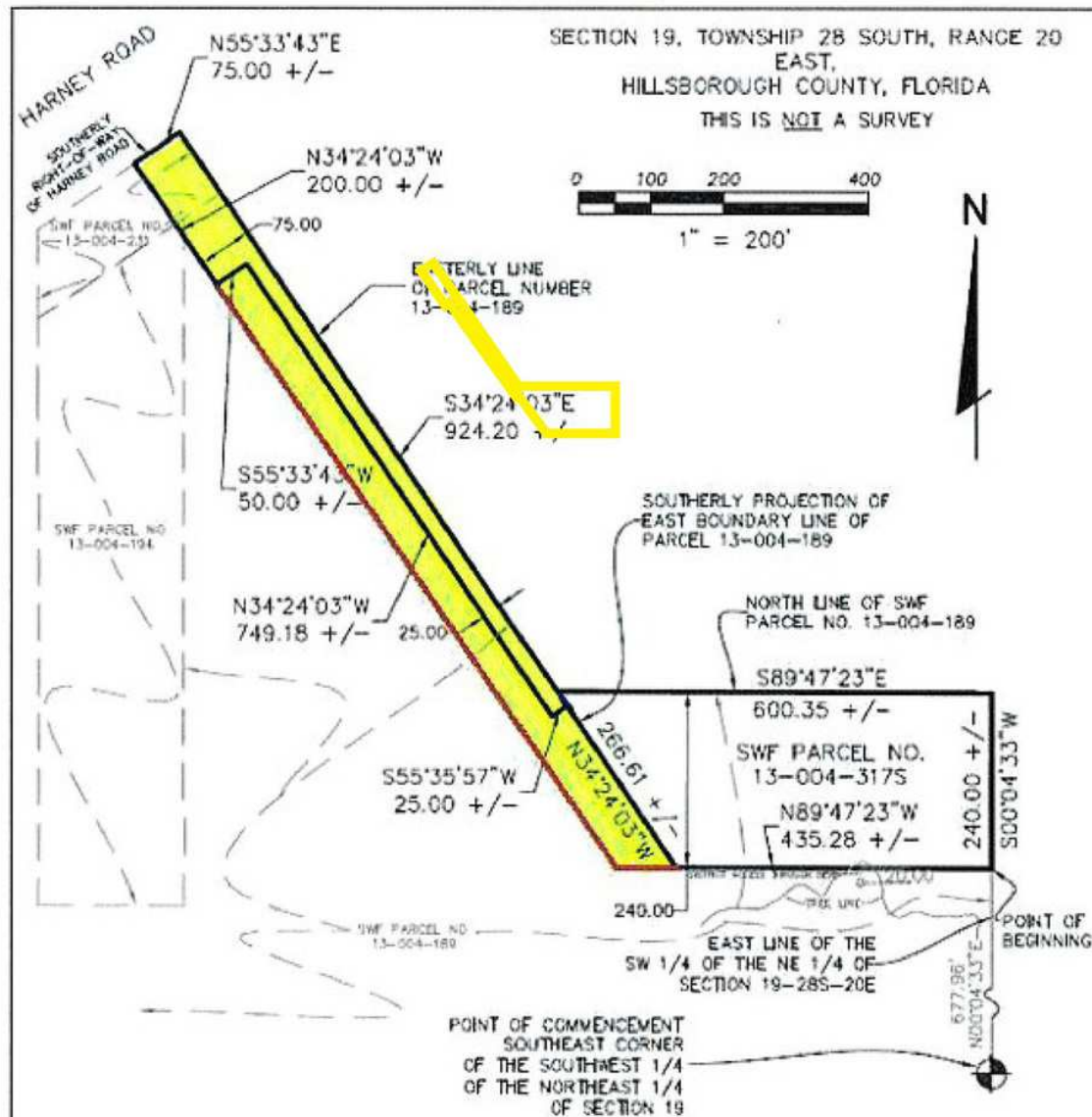
TAMPA

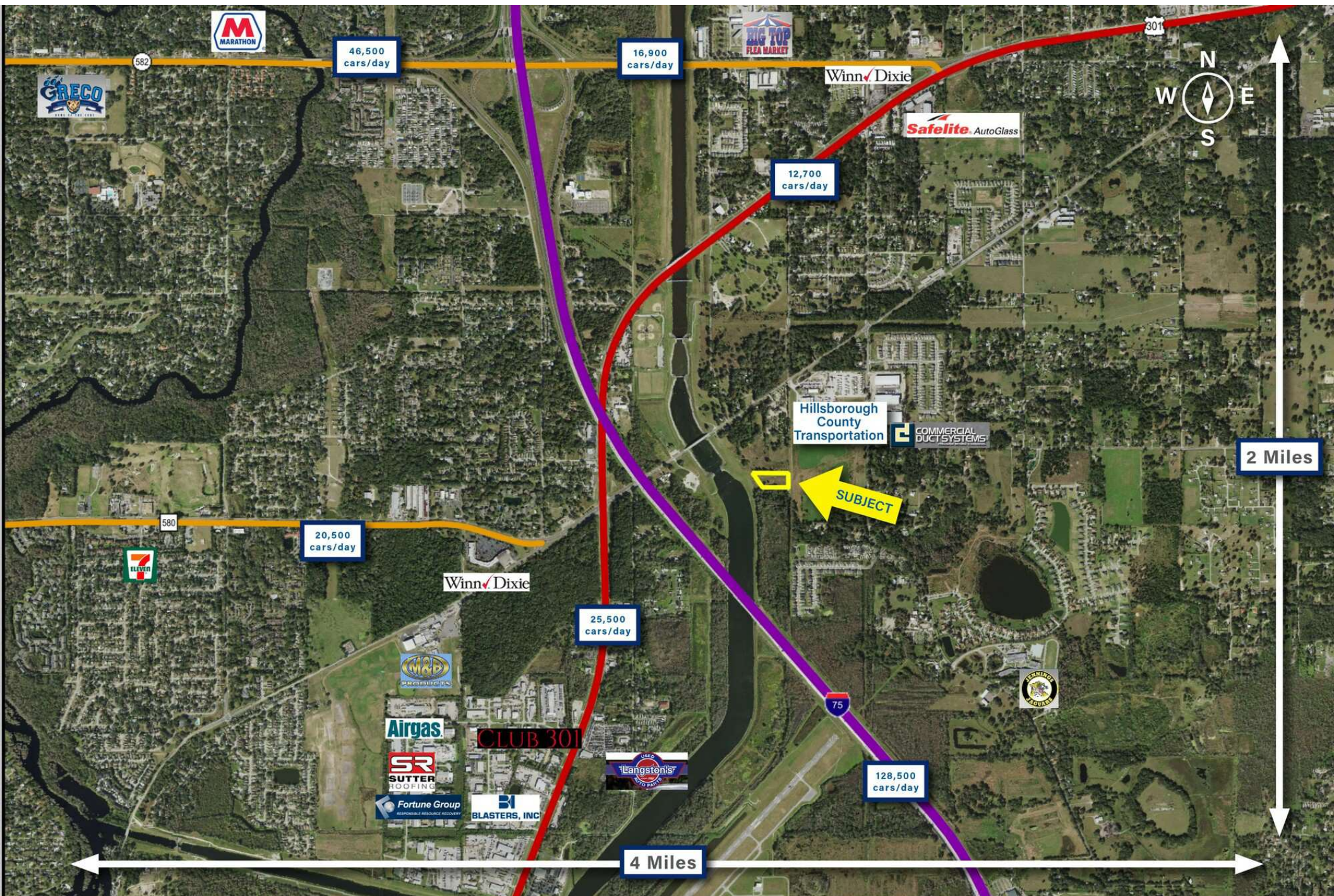
THONOTOSASSA

SUBJECT

ACREAGE BREAKDOWN

The ownership of the yellow highlighted area will be retained by Seller, with an easement granted to the Buyer of the non-highlighted area. The total outlined area is approximately 3.6 acres.







Hillsborough County

FLORIDA



Founded	1834	Density	1,400.5 (2019)
County Seat	Tampa	Population	1,521,410 (2023)
Area	1,051 sq. mi.	Website	hillsboroughcounty.org

Hillsborough County is located in the west-central portion of the U.S. state of Florida. In the 2010 census, the county's population sat at 1,233,511, making it the fourth-most populous county in Florida and the state's most populous county outside the Miami Metropolitan Area. As of a 2023 estimate, the population of Hillsborough County has now grown to 1,521,410, surpassing the populations of 12 separate US states. Leading this growth, Tampa serves as the county seat and largest city in Hillsborough County. Additionally, the county is part of the Tampa–St. Petersburg–Clearwater Metropolitan Statistical Area.



SAUNDERS
REAL ESTATE



SAUNDERS
LAND



SAUNDERS
COMMERCIAL

Serving the Southeast

At Saunders Real Estate, we deliver full-service real estate solutions across the Southeast, built on more than 30 years of trusted experience. Our dedicated teams—experts in both land and commercial real estate—offer tailored guidance backed by deep regional insight and a proven track record. We believe that successful outcomes start with strong relationships built on trust and a shared commitment to your goals.



877-518-5263 • info@saundersrealestate.com